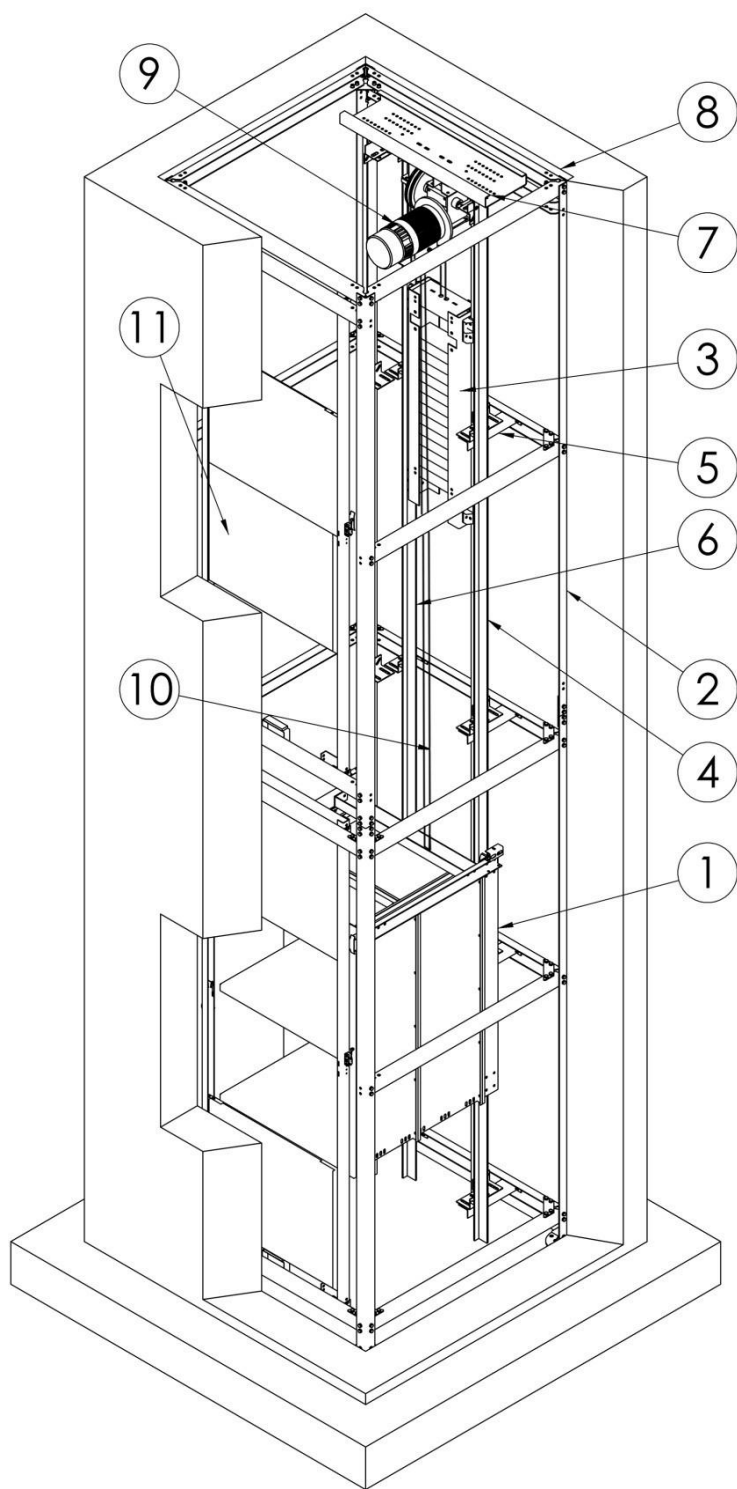


DUMB WAITER PICO

RANGE OF APPLICATION



1.	CAR SLING
2.	METAL SHAFT
3.	COUNTERWEIGHT FRAME
4.	CAR GUIDES
5.	GUIDE BRACKETS
6.	COUNTERWEIGHT GUIDES
7.	MOTOR BASE
8.	SHAFT WALL
9.	MOTOR
10.	WIRE ROPES
11.	LANDING DOORS

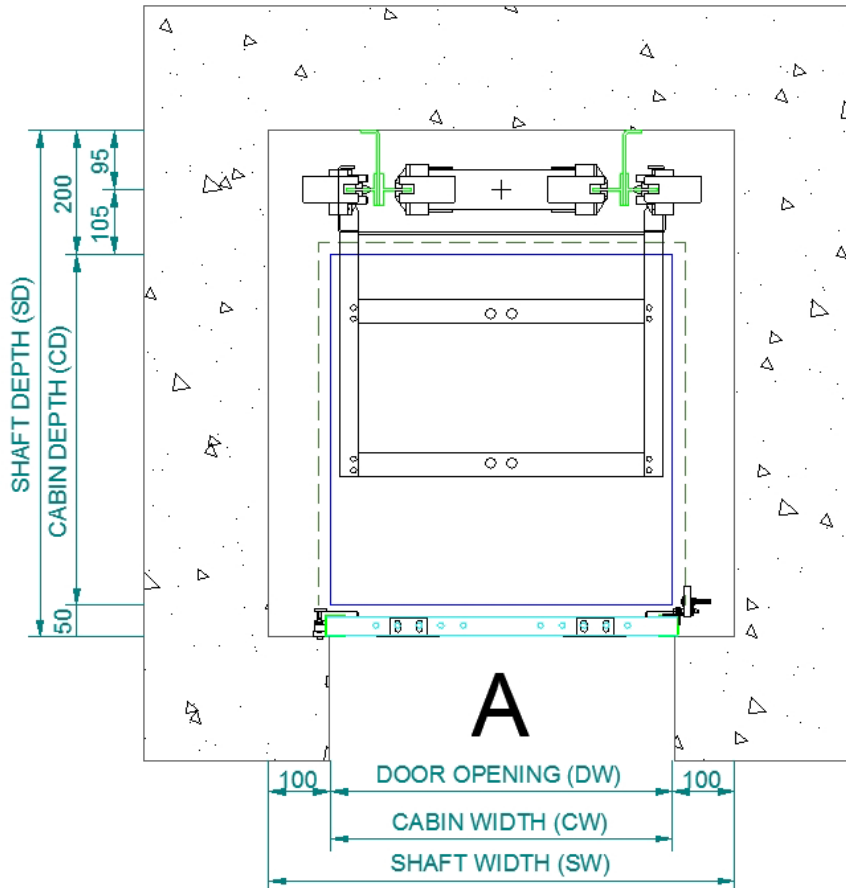
Technical specification

Type	DUMB WAITER
Nominal Load:	100 Kg
Suspension:	1:1
Maximum Travel:	15000 mm
Suspended Load	160 Kg
(P + Q)max	
Minimum Headroom: (Typical)	2550mm (2750mm with safety gear) Serving Height (800mm)+ Cabin Height (1000mm)+ Shaft components height (750mm without safety gear/950mm with safety gear DISG220)
Minimum Pit Depth + Serving Height:	Door Height / 2 + 200 mm*
Car Guides:	T50x50x5
Counterweight Guides:	T50x50x5
Car DBG:	500mm-950mm
Counterweight DBG:	Car DBG – 208mm
Motor type:	WORMGEARED MOTOR
Motor wattage: VVVF	0.75 kW
Minimum operating temperature:	- 30° C (ESSO-S220, MOBIL-Glycoil 30, SHELL-Tivela Oil WB, BP-Energol SG-XP 220, Texaco-B16Synoil CPL-220)
Controller's Minimum operating temperature:	-10° C
Sheave:	Ø200 mm
Nominal Speed:	0,5 m/s (VVVF)
Wire Ropes:	2xØ6 mm
Buffer:	ACLA Ø80x80mm
Safety Gear:	DISG 220

Layout arrangement:

Single entrance –Guide rails at the rear

Plan view

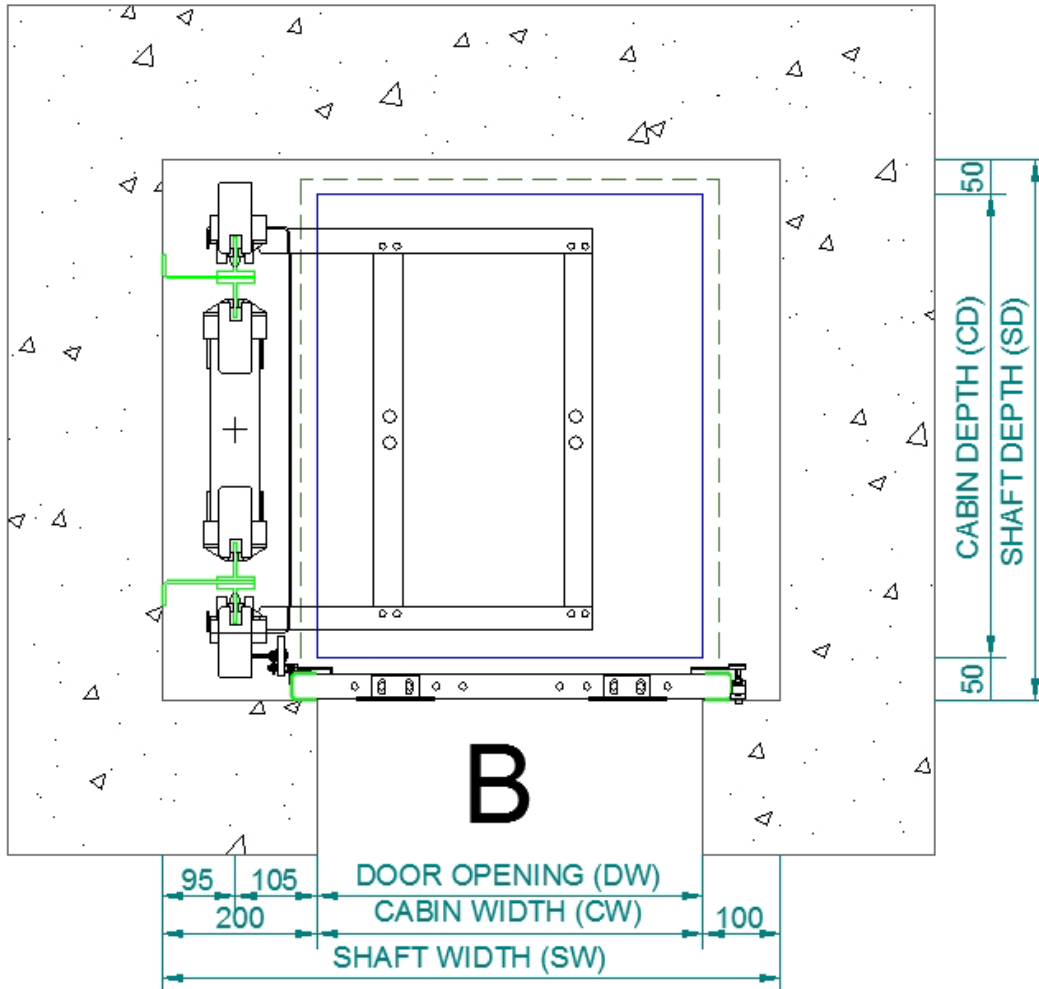


DOOR POSITION A (DOOR AT FRONT)							
MODEL	CABIN			SHAFT		DOOR	
RATED LOAD 100KG	WIDTH	DEPTH	HEIGHT	WIDTH	DEPTH	WIDTH	HEIGHT
	CW	CD	CH	SW	SD	DW	DH
PICO A	500-1000	500-1000	500-1200	CW+200	CD+250	CW	CH

Layout arrangement:

Single entrance – Guide rails at the side

Plan view

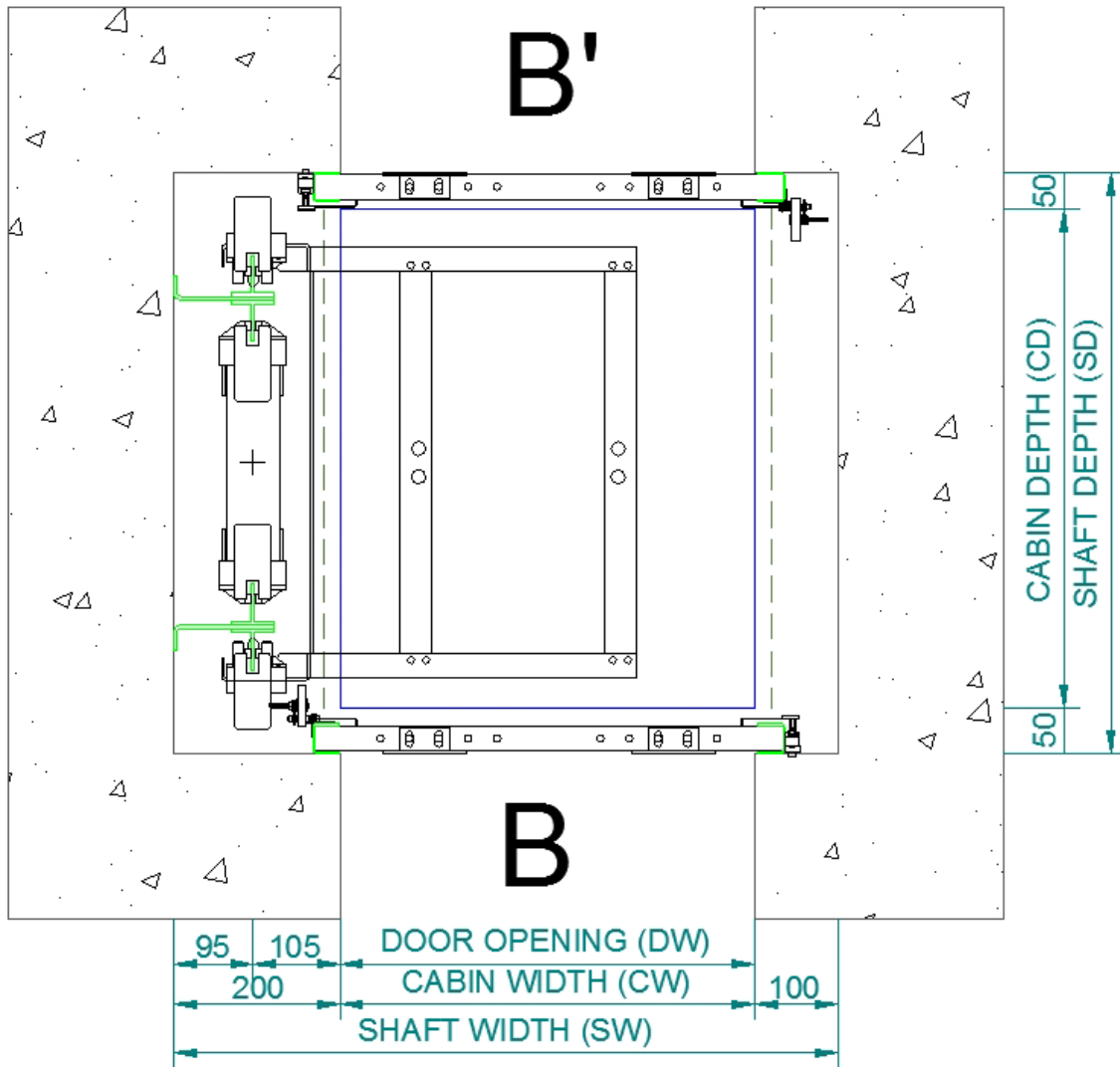


DOOR POSITION B (SINGLE SIDE)							
MODEL	CABIN			SHAFT		DOOR	
RATED LOAD 100KG	WIDTH	DEPTH	HEIGHT	WIDTH	DEPTH	WIDTH	HEIGHT
	CW	CD	CH	SW	SD	DW	DH
PICO B	500-1000	600-1000	500-1200	CW+300	CD+100	CW	CH

Layout arrangement:

Through Car – Guide rails at the side

Plan view

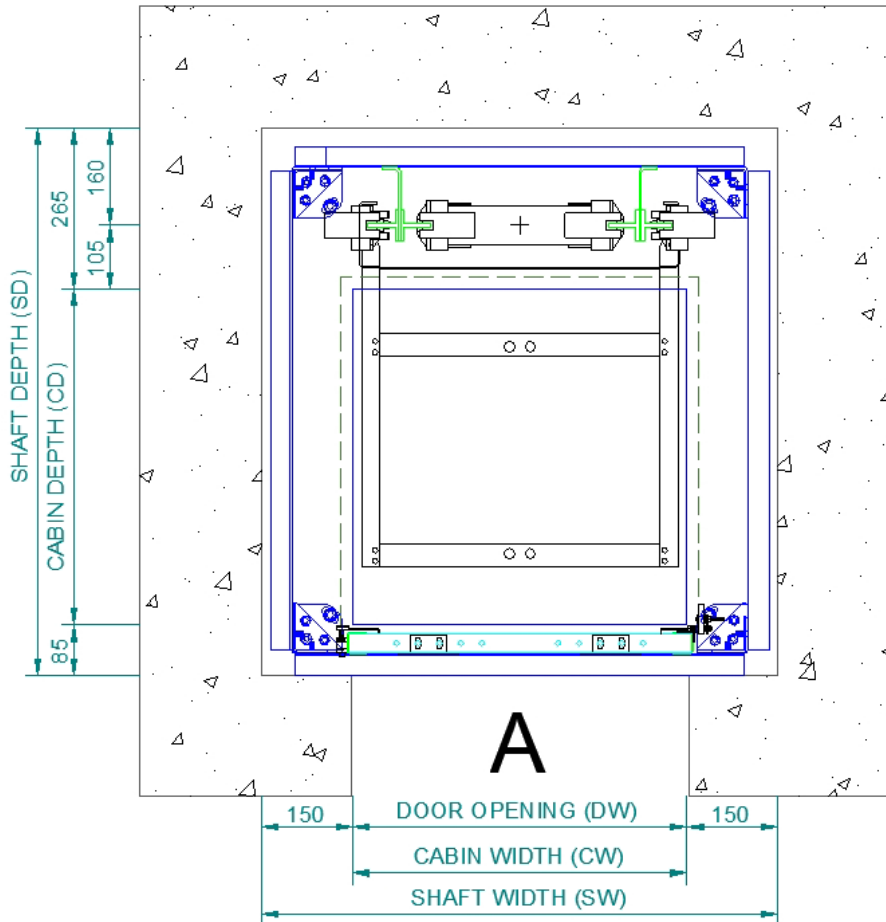


DOOR POSITION B-B' (THROUGH CAR)							
MODEL	CABIN			SHAFT		DOOR	
RATED LOAD 100KG	WIDTH	DEPTH	HEIGHT	WIDTH	DEPTH	WIDTH	HEIGHT
	CW	CD	CH	SW	SD	DW	DH
PICO B-B'	500-1000	600-1000	500-1200	CW+300	CD+100	CW	CH

Layout arrangement:

Single entrance – Guide rails at the rear (With metal shaft)

Plan View

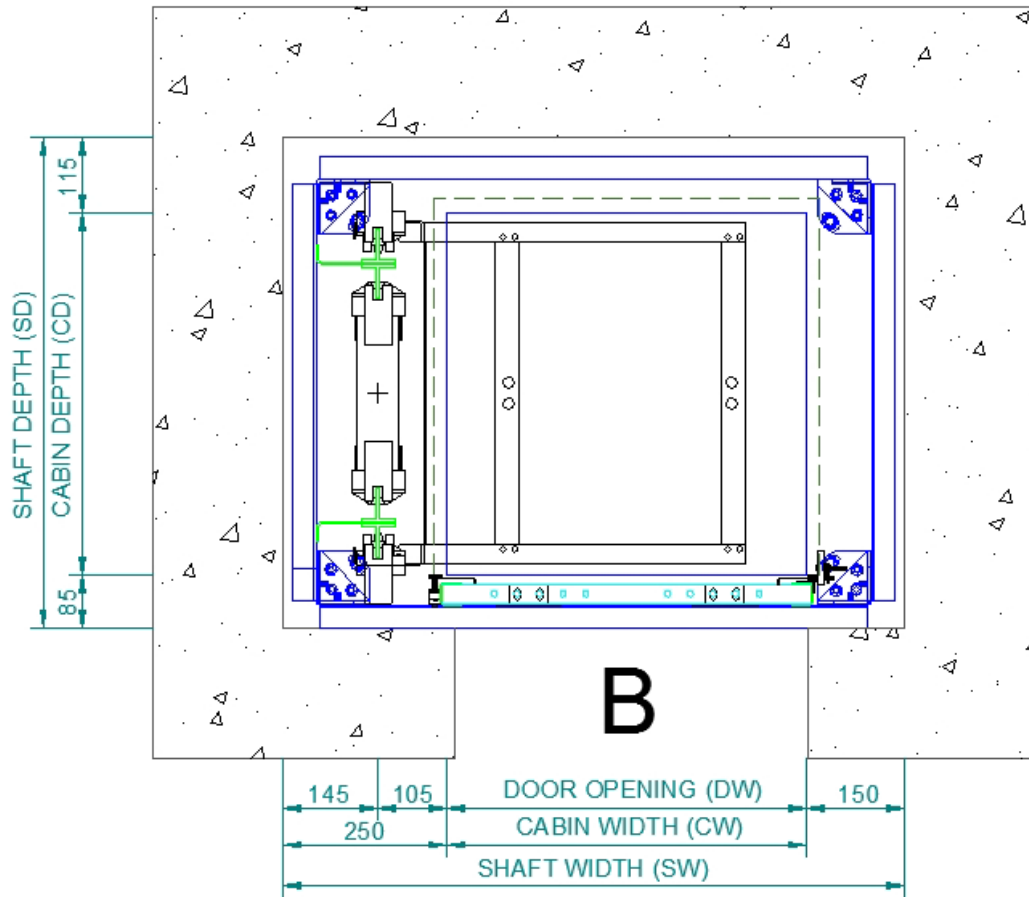


DOOR POSITION A (DOOR AT FRONT)							
MODEL	CABIN			SHAFT		DOOR	
RATED LOAD 100KG	WIDTH	DEPTH	HEIGHT	WIDTH	DEPTH	WIDTH	HEIGHT
	CW	CD	CH	SW	SD	DW	DH
PICO A	500-1000	500-1000	500-1200	CW+300	CD+350	CW	CH

Layout arrangement:

Single entrance – Guide rails at the side (With metal shaft)

Plan View

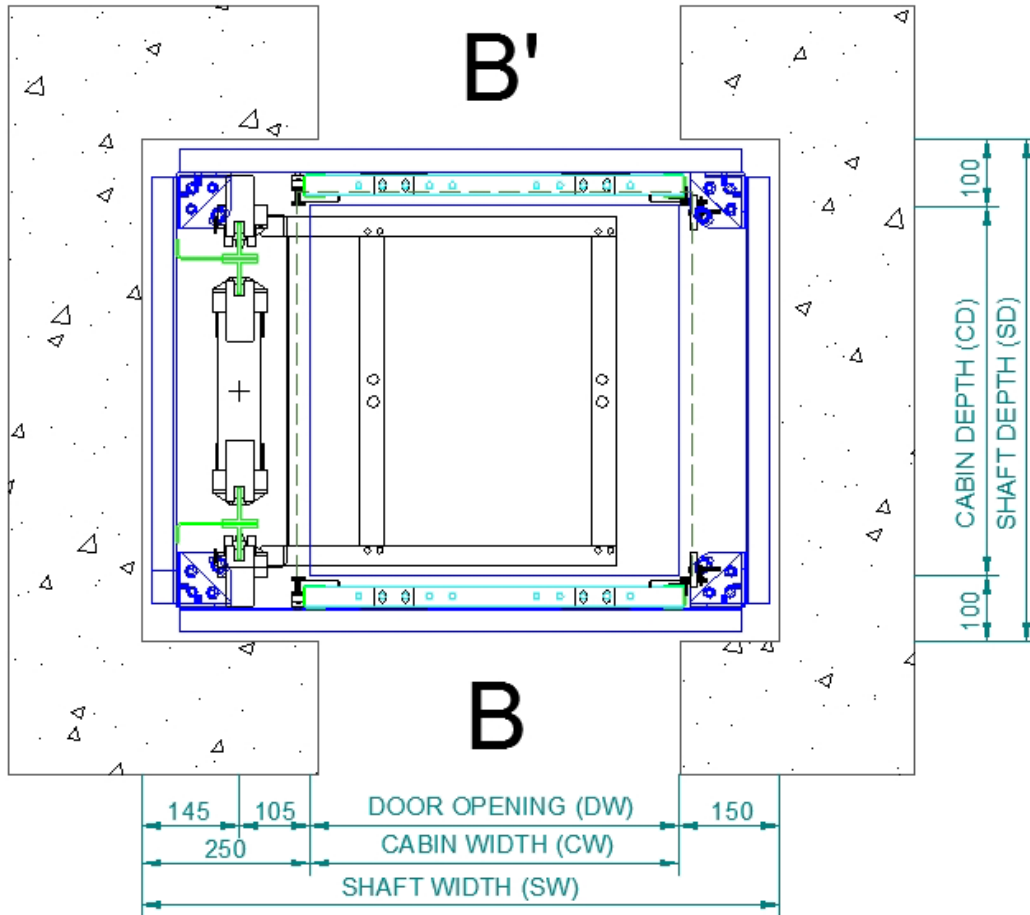


DOOR POSITION B (SINGLE SIDE)							
MODEL	CABIN			SHAFT		DOOR	
RATED LOAD 100KG	WIDTH	DEPTH	HEIGHT	WIDTH	DEPTH	WIDTH	HEIGHT
	CW	CD	CH	SW	SD	DW	DH
PICO B	500-1000	600-1000	500-1200	CW+400	CD+200	CW	CH

Layout arrangement:

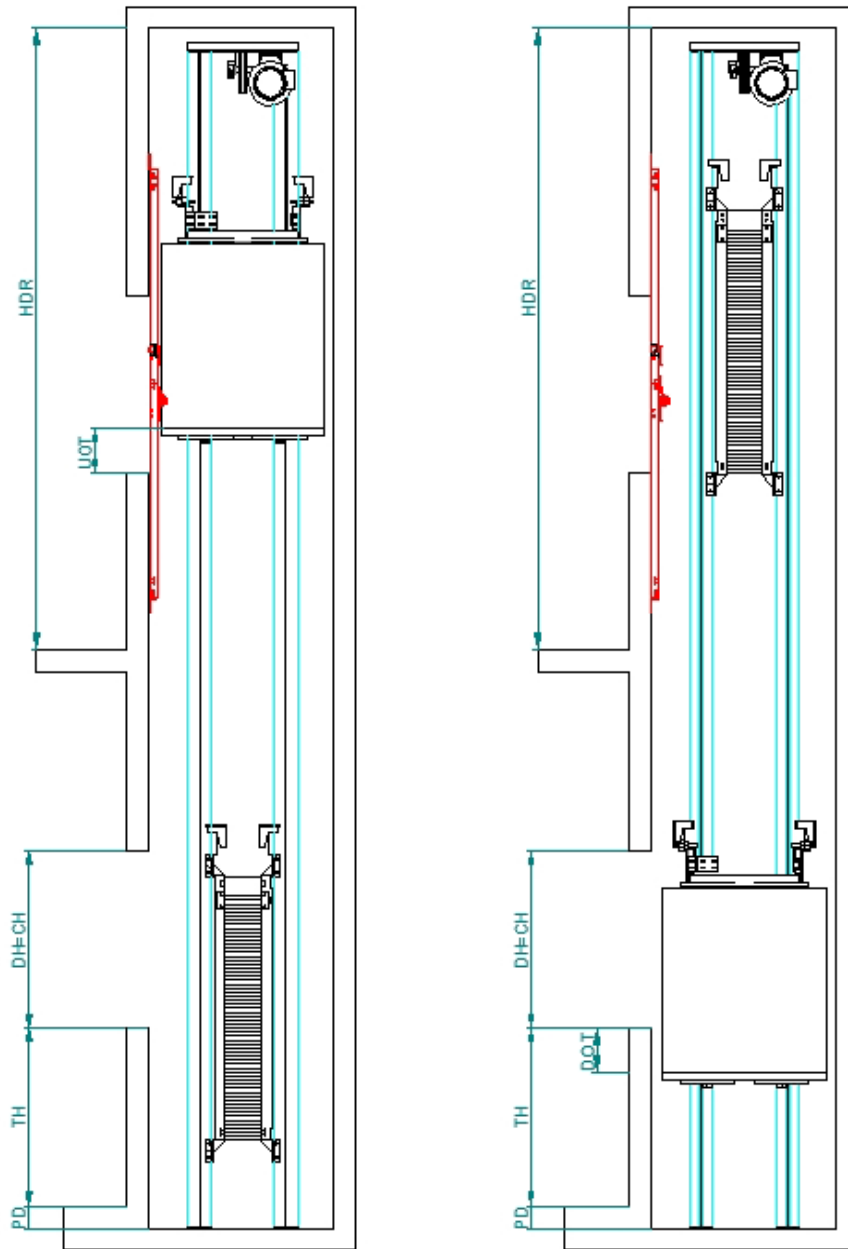
Through Car – Guide rails at the side (With metal shaft)

Plan View



DOOR POSITION B-B' (THROUGH CAR)							
MODEL	CABIN			SHAFT		DOOR	
RATED LOAD 100KG	WIDTH	DEPTH	HEIGHT	WIDTH	DEPTH	WIDTH	HEIGHT
	CW	CD	CH	SW	SD	DW	DH
PICO B-B'	500-1000	600-1000	500-1200	CW+400	CD+200	CW	CH

Layout arrangement:



HDR	HEADROOM	TH+CH+750 mm(min)
UOT	UPPER OVERTRAVEL	100 mm(min)
T	TRAVEL	15000 mm(max)
PD + TH	PIT DEPTH + SERVING HEIGHT	DH/2+200 mm(min)
DOT	DOWN OVERTRAVEL	100 mm(min)